



STAR GLOW

PROFESSIONAL
GUIDELINES

komeko
New Hairstylist Generation



STAR GLOW

Revive, tone and shine
natural or colored bases,
with flawless results.



komeko
New Hairstylist Generation

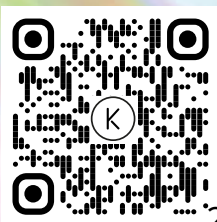
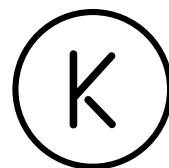


TABLE OF WITH- TENTS



- 7.The color palettes
- 12.pH checked "controlled"
- 13.developer
- 14.Using Blend
- 15.Q&A
- 16.Star Glow & Miracle HUE
- 17.Star Glow & Energy Color
- 19.StarGlow exclusive services



MULTI-FACETED SHADES **EXTRA
NATURAL AND LONG-LASTING**



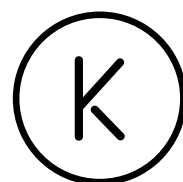
Latest generation Demi-
Permanent coloring
Zero Ammonia
100% multifaceted colour,
without lightening.

**The only one with Inulin
Complex,** active complex in
the formula for extreme shine
results

STAR
GLOW

NUANCES
BRILLIANT,
LONG





Create endlessly,
first

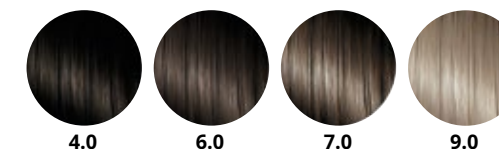
36
NUANCE



The **palette** nuances

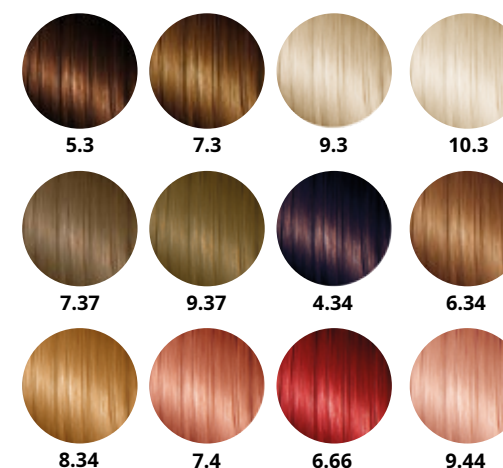
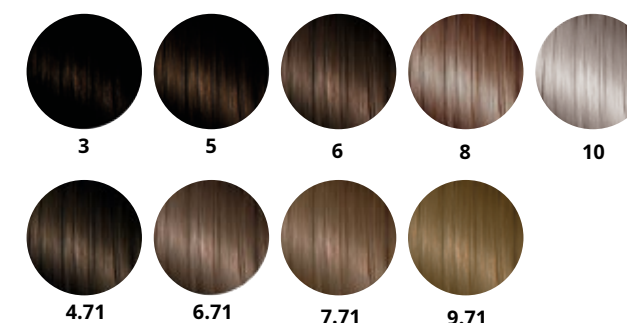
HueNatural Plus

Particularly indicated on regrowth, they have a good coverage of white hair, while remaining very natural when applied on lengths.



HueNatural

Nuances with a natural tone designed to enhance the shine and softness of lengths by masking the first white hair with wonderful reflections.

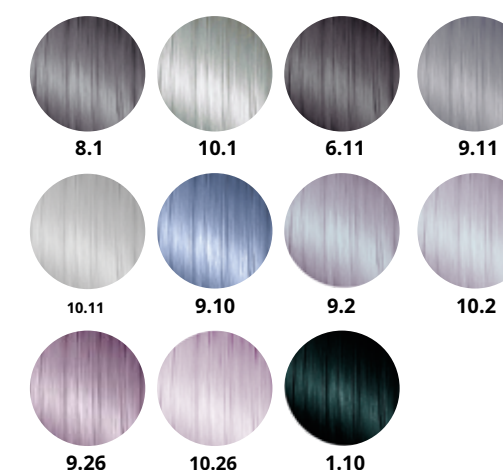


HueHot

They intensify reflections, revive dull colors and give new light to golden, coppery and red tones.

HueCold

Cool-toned nuances designed to neutralise unwanted warm (yellow-orange) reflections, creating cold and delicate nuances.



Star Glow






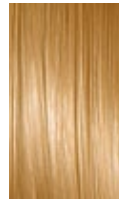





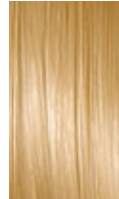





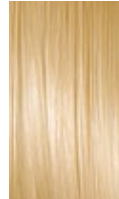





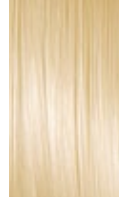






it is extra delicate and has no lightening power on natural hair:
the color result depends exclusively on the starting base.

The table alongside shows the color result based on the starting color.

BASIC DEPARTURE	6.66	7.4	6.71	10.1	10.2	9.10
						
						
						
						
						
						

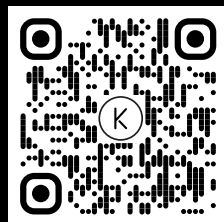
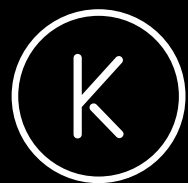
Cold purple, ashes, intense
ashes and warm shades on light
or very light hair can be too
intense.

Use the**DIAMOND**
in mixing to obtain more
delicate shades
and with a natural effect.

DIAMOND	6.66	9.37	10.11	10.26	9.10	8.34
1:1						
2:1						
3:1						
4:1						
5:1						

CHOICE OF SHADES
Always blend 1:1with Developer.
For example: 10 g Diamond + 1 g 6.11 + 11g Developer

The results are indicative and may vary depending on
the hair we are going to treat.



STAR
GLOW

STAR GLOW

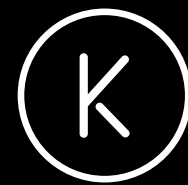


komeko
New Hairstylist Generation

komeko
New Hairstylist Generation



pH checked "checked"



THE SECRET OF STAR GLOW IT'S IN HIS UNIQUE FORMULA.

PH CHECKED SYSTEM

The pH of the mixture with Star Glow remains in an acid field throughout the coloring process, guaranteeing extraordinary results while respecting the hair.

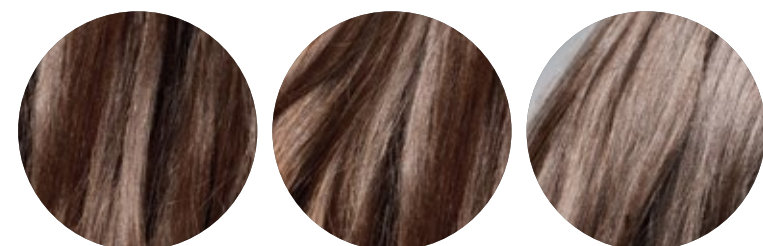
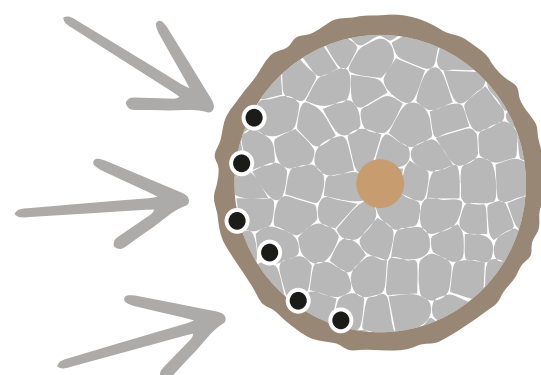
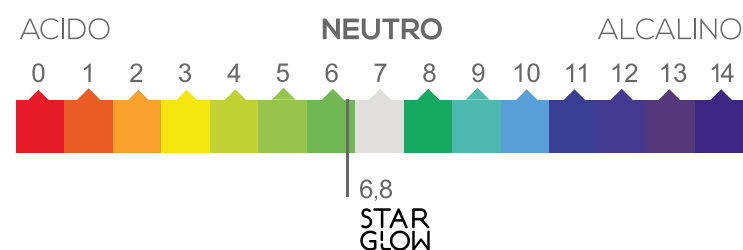
HOW DOES IT WORK?

The innovative acid pH formula of Star Glow makes the precursor of color penetrate the first cuticular layers which, subsequently, transformed in pigment, it will give a flawless and luminous color result for a long time. Without lightening and without damage to the hair structure.

INULIN COMPLEX

A Komeko exclusive: moisturizing treatment complex. From nature, a blend of oligosaccharides, simple sugars composed of fructose chains, which bind with water, enhancing the hydration action of the hair, increasing the shine, softness and silkiness of the stem.

Working in an acid field, Star Glow is able to uniform the cuticle by restructuring it, leaving the hair visibly healthy and silky, with a long-lasting multifaceted color result.

color
just madecolor
after one
weekcolor
after two
months

**100% COLOR
AND HAIR AT THE TOP**

Star Glowlight detectors.

The only ones able to guarantee you impeccable and long-lasting results.

developer

It is the line of specific activators designed with the **Inulin Complex** and **ph checked System in formula**, to control the pH in an acid field throughout the coloring process and ensure perfect results every time.

DEVELOPER

1



**For a color result
more marked
with a natural
and neutralizations
of the most decisive warm colors.**

DEVELOPER

2



**For color results
multifaceted and
neutralization of
warm colors of naturalness
impeccable.**

The Star Glow Color Gel mixed with its Developers has a non-drip consistency for a simple application, fast and controlled.

usage Blend

A high-performance and easy-to-apply gel consistency, able to satisfy any need in the salon.

Application Guide



DRY HAIR

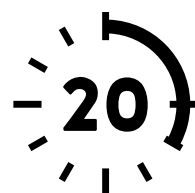
To obtain splendid reflections with a more decisive coverage of the base colour, neutralizing the most evident warm reflections.

PRE-WASHED HAIR

For a more delicate and reflected result, both in the neutralization of pre-lightening and in toning.

1 Leave on for 20 minutes

In case of neutralization of reflections given by pre-lightening, it is advisable to check visually until the desired result is obtained.



2 Finished the shutter speed add water to emulsify the colour, remove the product from the face contour, proceed with a shampoo. DO NOT apply a POST COLOR TREATMENT.

APOST COLOR TREATMENT normally it is generally used after a technical color service, lightening, straightening or waving to balance the natural pH of the hair: working with a controlled acid pH, Star Glow does not require this treatment and already guarantees a restructuring effect. Apply a conditioner if needed.

Q&A

CAN I MIX STAR GLOW WITH MIRACLEHUE ACTIVATOR?

NO. Any other activator is unable to maintain mixing in the acid field, compromising the final result of shine, brilliance and restructuring of the hair.

ARE THE SHADES OF STAR GLOW THE SAME AS ENERGY COLOR AND MIRACLEHUE?

NO. Star Glow has no brightening power. This means that it creates an iridescent effect in combination with the natural or treated color base on which it is applied.

STAR GLOW CAN I USE IT ON WHITE HAIR?

YES. It can be used to revive the gray of white hair with a natural shade. It is able to cover up to 60/70% of whites with a very natural result and not to be compared to classic oxidation colours.

WHEN DO I USE STAR GLOW?

It can be used with optimal results both on natural hair and on hair that has already been colored or lightened. It is perfect for covering the first gray hair with a natural and luminous result. To revive a light-free natural/base colour. To play with trendy shades without damaging or stressing the hair.

LAYING TIMES



For an intensity color 15 minutes under heat source



Star Glow

Endless possibilities to create.

STAR GLOW&MIRACLE HUE

Synergy for excellence

Two similar color services

for visibly different and similarly extraordinary results.



inulin complex
MIRACLE HUE
AMMONIA FREE • TONE-ON-TONE HAIR COLOR

Bright result
with maximum coverage
with a natural effect.



**STAR
GLOW**

Multi-faceted, luminous and
natural long-lasting results,
without lightening the hair.

Merits / Advantages

- Alkaline Formula
- Ammonia Free
- 70/90% coverage
- Whites Duration 18 washes
- No Brightening power
- Can be combined with Star Glow

- Acid Formula
- Ammonia Free
- Toning with Naturalness
- No color overload
- No Brightening power
- Can be combined with Miracle Hue

How to Use



Mix with Miraclehue Activator 7 Vol.
(2%) or 13 Vol. (4%)

1:2



Mix with Star Glow
Developer 1 + Developer 2

1:1



inulin complex
ENERGY
COLOR

Result of intensity and coverage
without neglecting the brightness
of the hair.



**STAR
GLOW**

Multi-faceted, luminous and
natural long-lasting results,
without lightening the hair.

Merits / Advantages

- Alkaline Formula
- Formula NH3 Encapsulated
- 100% white coverage
- Duration with regrowth
- Brightening power
- Can be combined with Star Glow

- Acid Formula
- Ammonia Free
- Toning with Naturalness
- No color overload
- No Brightening power
- Can be combined with Energy Color

How to Use



Mix with Energy Color Activator 7
Vol. (2%) or 13 Vol. (4%)

1:2



Mix with Star Glow
Developer 1 + Developer 2

1:1





The new professional demi-permanent coloring for hair color with a “stellar” luminosity

On all hair types, you get the perfect synergy between color naturalness and extreme brilliance.

STAR DIAMOND GLOW

An exclusive and regenerating formula, in an easy-to-apply texture, gives the color an unprecedented luminosity.

UNIFORMITY GLOW

Naturally correct and cover uneven colours, strikethroughs, extreme or uneven lightening in a single gesture.

COVERS GLOW

Silky, regenerated hair and brilliant reflections like diamonds.

SYNERGY GLOW

Coverage and natural reflections, correction of discolorations and silk effect on the hair, in synergy.

BRIGHT extension GLOW

Revive the color of hair treated with Energy Color or Miracle Hue, revitalizing faded lengths and ends with a natural effect.

MULTI DIMENSIONAL GLOW

Star Glow + Natural Lightening for multi-faceted WOW effect results.

STAR
GLOW

See with your own eyes.

STAR DIAMOND GLOW

Silky, regenerated hair and brilliant reflections like diamonds.

How to use:

1) Perform a light alkaline shampoo, without shutter speeds. Dab the excess water and apply Diamond + Developer 1 diluted at the same dose, using the applicator for better distribution. Always in the washing station,

massage well on the base, lengths and ends and leave on for about 10 minutes.

2) After the processing time, rinse thoroughly and proceed with drying as usual.

Do not apply shampoo or mask.

Marketing Proposal:

Star Diamond Glow is the perfect solution both for clients who want to keep the color alive and bright between one color treatment and another, and to illuminate and regenerate dull and dull natural hair. Extreme light effect + regenerating effect guaranteed.

look created with the use of



UNIFOR MITY extension GLOW

Correction and color coverage, discolorations and unwanted reflections in a single gesture, natural effect.

How to use:

1) Define the darkest nuance among the various uneven colors present on the client's hair. To harmonize the color, use an alkaline shampoo without shutter speeds, dab the excess water in the hair, and apply the mixture diluted 1:1 with Developer 1, leaving it on for about 20 minutes.

2) After the processing time, add hot water, massage everything, rinse thoroughly and apply a mask if necessary. Proceed with drying as usual.

Marketing Proposal:

Uniformity Glow is designed for customers who want to harmonize color by eliminating unwanted stains, discolorations and reflections, caused by do-it-yourself colours, thermal equipment such as hair dryers and irons.

look created with the use of



COVERS GLOW

Natural and bright
coverage and reflections,
in one pass.

How to use:

- 1)After having agreed on the color with the client, (choosing the Natural Plus Tones) prepare the color in a non-metallic bowl in a 1:1 dilution with Developer 1. Apply the mixture starting from the regrowth, leaving it on for 10 minutes.
- 2)Subsequently, also in combination with other nuances for richer reflections, apply the mixture on lengths and ends for a total of 20 minutes.
- 3)After the processing time, add hot water, massage everything and rinse thoroughly.
Apply a mask if needed and blow dry as usual.

Marketing Proposal:

Cover Glow responds to the needs of customers with gray hair around to 50 – 60%, who want a natural and translucent coverage able to minimize the regrowth effect and respect the health of the hair.

look created with the use of



SYNERGY GLOW

Coverage and natural
reflections, dyschromia
correction and silk effect on the
hair, in synergy.

How to use:

- 1)After deciding on the combination of Star Glow with Miracle Hue or Energy Color based on the desired result, apply Miracle Hue or Energy Color on the regrowth, leaving it on for 15 minutes.
- 2)Prepare the chosen Star Glow mixture in a non-metallic bowl with Developer 2 in a 1:1 ratio and apply it on lengths and ends, overlapping so uneven with the previously applied color. Starting from the back, strand by strand, massaging for better distribution and leave on for another 20 minutes for a total of 35 minutes.
- 3)Once the processing time has elapsed, add water, massage and rinse abundantly, perform an acid pH cleansing (mask is not necessary) and proceed with drying as usual

Marketing Proposal:

Synergy Glow is perfect for clients with around 60 – 80% gray hair when used in synergy with Miracle Hue, and up to 100% when used in synergy with Energy Color. Suitable for those who want good coverage with natural and elegant reflections.

look created with the use of



BRIGHT extension GLOW

Revive the color of hair treated with Energy Color or Miracle Hue, revitalizing it faded lengths and ends with a natural effect.

How to use:

- 1) Carry out an alkaline shampoo without shutter speed, dab the excess water in the hair, prepare the mixture in 1:1 dilution with Developer 2 and leave on for about 15 minutes.
- 2) After the processing time, add hot water, massage everything and rinse thoroughly, apply a mask if necessary and proceed with drying as usual.

Marketing Proposal:

Bright Glow is perfect for clients with natural or color-treated hair who want to revive a faded color or achieve new luminous and natural shades.

look created with the use of



MULTI DIMENSIONAL GLOW

Star Glow + Natural Lightening for results multifaceted WOW effect.

How to use:

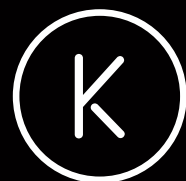
- 1) Choose the Zero Color lightening product based on the result to be achieved, carry out the desired lightening and perform a delicate shampoo.
- 2) Dab the excess water in the hair and apply the desired mixture of Star Glow in an equal dose 1:1 with Developer 2, the processing time will vary based on the absorption of the color in the toning (visual inspection).
- 3) After the processing time, add hot water, massage everything and rinse thoroughly, apply a mask if necessary and proceed with drying as usual.

Marketing Proposal:

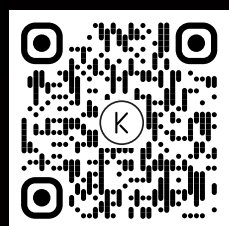
Multidimensional Glow is perfect for the most demanding customers who want trendy looks, full of reflections, while maintaining the health of the hair.

look created with the use of



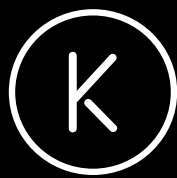


STAR
GLOW



komeko
New Hairstylist Generation





komeko
New Hairstylist Generation

komeko.it